

ENSYSTEX™

LEADING INNOVATION IN PEST MANAGEMENT

WORLD CLASS INNOVATION AND PRODUCT DISCOVERY
TARGETED PRODUCT RANGE
TEAM OF EXPERTS



PRODUCT INFORMATION



- ✓ **PREMIUM QUALITY** YOUR COMPLETE SATISFACTION GUARANTEED OR A FULL REFUND
- ✓ **COMMITTED TO YOU** TECHNICAL SUPPORT AVAILABLE 24HRS 365 DAYS A YEAR
- ✓ **UNRIVALLED EXPERTISE** ALWAYS DELIVERING YOU THE ADVICE YOU NEED, WHEN YOU NEED IT

ABOUT ENSYSTEX

Ensystem is a global, research-based company focused on providing **environmentally responsible, effective, urban pest management solutions** and has achieved a high international reputation for these products.

Our commitment to the pest management industry is displayed through the team of dedicated professionals employed in Australia. Ensystem now has the largest technical sales support team of any innovation based company in Australia. We are here to assist you should problems ever arise. Ensystem has specialists in all States of Australia, and you also have the support of our Australian laboratory complex for soil testing, chemical analysis, etc.

Ensystem develops and owns all its own formulations, performs QA and batch analysis checks on all batches of chemicals and guarantees the consistent quality of all materials sold. Ensystem is a true specialist in professional pest management for the urban and public health environment.

YOU CALL - WE JUMP

We're all aware that working in today's tough, demanding, fast forward environment, when a problem comes up, it can make life very difficult. That's why Ensystem has a strong "help" line, dedicated to our valued clients.

If you have any technical questions or require technical support all you have to do is call **13 35 36** and follow any prompts. We then guarantee that one of our technical support specialists will call you back within 2 hours of your call being placed to assist with the matter.

This support is available 24 hours a day, 365 days a year!

YOUR ENSYSTEX GUARANTEE

If any Ensystem product fails to meet or exceed your expectations, return the unused portion in the container, at our expense, and we will issue you with a full refund. If you have a challenging situation, Ensystem guarantees to assist you with the matter and, where required, send one of our trained technical support specialists to visit the site with you.

Ensystem always uses the highest quality materials to ensure optimal efficacy and safety. MSDS to international standards are available for all Ensystem products and, where relevant, AQIS Approval Certificates for product use in Export Meat Production Facilities are also available.

ENSYSTEX FORMULATIONS

Ensystem is a world leader in bait technologies and the development of aqueous (water-based) suspension concentrates. Ensystem guarantees all formulations are of a class-leading standard.

Unique Micro-fine Suspensions

With suspension concentrates particle size is critically important. If the particles are too large the product will leave unsightly residues, if too small they will sink into porous surfaces. For this reason Ensystem uses a custom-built, highly refined vertical milling process to ensure a micro-fine particle size. These micro-fine particles are then more easily picked up by the insects, yet they will remain on porous surfaces to give you improved residual performance on even the most difficult surfaces such as concrete. Moreover, the microfine particles will enter the insect's spiracles more readily which leads to faster kill and a more effective product.

Ensystem then uses a sophisticated suspension system to suspend the particles in the water-based formulation and protect it from degradation and microbial / fungal attack. This ensures that the actives remain suspended in your spray tank, so whenever you spray you are placing the optimal amount of active onto your treated surface. (Of course you should always agitate your spray mix prior to commencing a treatment program.) All water-based products also employ Ensystem's unique Microbial Protection Blend™. All water-based products are subject to microbial infection once they have been opened, or after resting in your spray tank. This can lead to strong odours, mould growth and poor performance. To help combat this, all reputable manufacturers include a biocide in their formulation to protect against gram-positive bacteria. Since these biocides are expensive, the cut-price formulators leave them out, leaving you with potential problems. At Ensystem we offer an even higher level of protection since our Microbial Protection Blend™ uniquely provides protection against both gram-positive and gram-negative bacteria, thus ensuring the highest quality product at all times.

And all Ensystem products come with a written Quality Performance and Support Guarantee, your contractual agreement from Ensystem that we will be there to support you - ALWAYS!

YOUR ON TIME DELIVERY GUARANTEE...

ENSYSTEX MAKES THIS COMMITMENT TO YOU:

If you place your order before 2.00pm AEST*, your order will leave the same day. If you place your order after 2.00pm AEST, your order will leave the next day. Ensystem delivers your products, door to door, using Australia's leading courier services to optimise prompt receipt of goods.

(*) 12.00pm for pallet orders.

AEROTHOR™

EXTRA STRENGTH CRAWLING INSECT SPRAY

Extra strength, super fast kill aerosol spray.



AEROTHOR KEY FEATURES

- ✔ **Superfast knockdown of cockroaches;** Quite Simply, nothing is faster than AEROTHOR in terms of speed of performance for flushing and killing cockroaches. In fact AEROTHOR will knockdown cockroaches in just a few seconds!
- ✔ **Extra Strength;** To give you the performance you expect as a professional pest manager.
- ✔ **Two Way Nozzle;** This specialised aerosol nozzle allows you to spray through the nozzle for a powerful blast covering a larger area; or alternatively, flip the targeted straw application nozzle into place for accurate treatment into cracks and crevices.
- ✔ **Labelled for the control of Crawling Insects;** So you can use it against all common pest species.
- ✔ **Two Pyrethroid Actives;** AEROTHOR contains two actives. Imiprothrin provides super-fast knockdown and kill of crawling pests while the cypermethrin provides long-lasting residual performance.
- ✔ **Will not harm plants;** Safe to use around plants or garden areas.
- ✔ **Low toxic;** So you can use AEROTHOR in schools, kitchens, hospitals, domestic residences, offices, etc.

AEROTHOR PRODUCT DETAILS

- Active Ingredients:** 2 g/kg cypermethrin, 1.4 g/kg imiprothrin
- Insecticide Group:** Pyrethroid
- Formulation Type:** Aerosol
- Pests Controlled:** Crawling insects including, bed bugs, cockroaches, silverfish, ants, carpet beetles, fleas, spiders, millipedes and clothes moths
- Pack Size/ Code:** 350 g can (CHEAX1001)
12 x 350 g cans (CHEAX1000)
- Resistance Group:** 3A

HOW TO USE

Shake can well before using. Keep can as upright as possible and hold about 15-20 cm from the surface. Avoid using on plastic surfaces. Treating surface with AEROTHOR Extra Strength Crawling Insect Spray will kill and protect against a large range of crawling insects. For direct kill spray in the direction of the crawling insect.



ATTRATHOR™

TARGETED INSECTICIDE

A world first: LIQUID BAIT with advanced micro-encapsulated attractant combined with micro-encapsulated fipronil, the active you know and trust.

ATTRATHOR KEY FEATURES

- ✔ **Quick-release Insect Attractant Micro-capsules™;** Tiny, 2 µm, solid-core capsules which contain the cockroach food attractant in a matrix within a polymer shell. These tiny Micro-capsules have a large surface area relative to their volume, which allows for the quick-release of the attractant. The attractant diffuses out through the polymer shell, quickly luring the cockroaches to the ATTRATHOR Target Zone™.
- ✔ **Controlled-release Active Micro-capsules™;** Larger, 35 – 55 µm, liquid-core capsules contain the active fipronil. These capsules have a finer polymer shell and, trapped within the liquid fipronil core, are tiny bubbles of CO₂. These pressurise the capsules, ensuring that when the insect makes contact with them, the capsules burst open, releasing the deadly fipronil within. These Micro-capsules control the release of the fipronil to ensure maximum residual performance. The larger size also ensures improved performance on porous surfaces.
- ✔ **Quick Elimination;** Within 48 hours, there will be a significant reduction in pest numbers.
- ✔ **Attractive Betrayal;** Insects are lured to the ATTRATHOR Target Zone™ by the Quick-release Insect Attractant Micro-capsules™ where they unknowingly pick up the deadly Controlled-release Active Micro-capsules.
- ✔ **Easy Application;** through traditional spray equipment targeted into cockroach harbourages. ATTRATHOR can partner, or replace, gel bait technology.
- ✔ **Kills More Cockroaches;** Cockroaches passing over the film pick-up the Active Micro-capsules, loaded with fipronil. When they later socialise, they unknowingly pass the toxicant on. This creates the Viral Transfer Effect™ leading to the kill of more cockroaches

ATTRATHOR PRODUCT DETAILS

- Active Ingredient:** 26 g/L fipronil
- Insecticide Group:** Phenylpyrazole
- Formulation Type:** ATTRACT & KILL - Liquid Bait
- Pests Controlled:** Cockroaches and ants
- Pack Size/ Code:** 500 mL (CHEAT1001)
- Resistance Group:** 2B

PERFORMANCE

ATTRATHOR is unique since it provides both active and passive control of cockroaches.

ACTIVE CONTROL is achieved when the Quick-release Insect Attractant Micro-capsules™ lure the cockroaches to the ATTRATHOR Target Zone™ where they break the Controlled-release Active Micro-capsules™ containing the deadly fipronil. Due to fipronil's non-repellent chemistry, with its presence further concealed by the polymer coating of the Micro-capsules, the cockroaches remain totally unaware of the presence of the fipronil.

Death occurs through either Contact Action - as the fipronil passes into the cockroach through the cuticle; Stomach Action - as the cockroach grooms itself and breaks or removes the Active Micro-capsules laced with fipronil; or through the Viral Transfer Effect™ - where the cockroaches pass the Active Micro-capsules onto other cockroaches.

PASSIVE CONTROL is achieved through the effects of the liquid film forming a residual defence zone. ATTRATHOR is applied as a targeted surface spray into cockroach harbourages and areas where cockroaches frequent. Here it works like any other residual surface spray, except there is a very big benefit because ATTRATHOR is powered by fipronil's non-repellent insecticidal chemistry. The cockroaches cannot detect the presence of the fipronil, so they readily cross the treated target zone. Plus the micro-encapsulation protects the fipronil, slowly releasing it over time; providing up to three months of passive control.

BITHOR™

DUAL ACTION INSECTICIDE

The Silent Assassins! Two actives, two different modes of action combine into the unstoppable insecticide.



BITHOR DUAL ACTION KEY FEATURES

- ✔ **Two Actives;** each with a totally different mode of attack combine into one unstoppable insecticide that is stronger than its individual components.
- ✔ **Non Repellent;** bifenthrin is combined with the non-repellent imidacloprid, to create a combination product that is effectively non-repellent.
- ✔ **Blended Active Concentrate (BAC) Technology;** the two actives are milled and blended together so they meld into one to disguise their presence.
- ✔ **Long term;** residual action is provided through the intensified effects of two well known and trusted actives.
- ✔ **Power From Synergy;** By combining two actives from two totally different chemical groups we create a unique product that kills the toughest pests. The two actives combine together to create a synergistic effect with each actively intensifying the effects of the other, to create a more potent solution than either alone.
- ✔ **Two Different Modes of Action;** imidacloprid is a neonicotinoid insecticide that acts as a synaptic toxin. It mimics the actions of the naturally occurring neurotransmitter, acetylcholine. In contrast, bifenthrin is a pyrethroid insecticide that acts as an axonic toxin affecting the sodium : potassium gate.

BITHOR DUAL ACTION PRODUCT DETAILS

- Active Ingredients:** 45 g/L bifenthrin and 55 g/L imidacloprid
- Insecticide Group:** Bifenthrin (Pyrethroid) and imidacloprid (Neonicotinoid)
- Formulation Type:** Odourless, waterbased micro-suspension concentrate
- Pests Controlled:** Bed bugs, spiders, ants, cockroaches, mosquitoes, fleas, flies, biting midges & paper nest wasps
- Pack Size/ Code:** 1 L (CHMBI1007), 3 L (CHMBI1008)
- Resistance Group:** 3A 4A

PERFORMANCE

BITHOR DUAL ACTION blends two actives, bifenthrin and imidacloprid, together to form a micro-suspension concentrate, where the particle size is optimised to penetrate the insect cuticle more readily, whilst providing improved residual performance on a wide range of surfaces and under a wide range of weather conditions.



BLATTATHOR™

GEL COCKROACH BAIT

The Natural Solution for Cockroach Baiting.

Advanced gel technology in a unique clear formulation. Highly palatable, highly active and no resistance worries.

BLATTATHOR KEY FEATURES

- ✔ **A unique, clear coloured gel;** Other cockroach gels are either brown or white in colour, so they are unsightly in modern kitchens and homes. The unique clear gel of BLATTATHOR ensures the utmost discretion for your clients.
- ✔ **Dual mode of action means no resistance;** In addition to working as a strong killing agent with a unique mode of action, it also works as an insect growth regulator, upsetting nymphal growth, sexual maturity and egg laying. Quite simply this means that whilst with other, lesser cockroach baits you are advised to regularly change your bait due to resistance concerns, this is not necessary with BLATTATHOR.
- ✔ **Viral Feed Through Effect;** BLATTATHOR works by attracting cockroaches to feed on the gel. Once they have fed on the gel they return to their harbourage where the natural insect toxin then kills the cockroaches. They die and then infect other cockroaches. This 'viral' effect gives you optimal results.
- ✔ **Stop feed Action;** Whilst detailed studies have shown that cockroaches prefer BLATTATHOR to other food sources, they do not overfeed because BLATTATHOR triggers feeding inhibition. So, once the cockroach has consumed a lethal dose, it stops feeding and you do not waste any bait. This means bait placements last longer since, once a cockroach has eaten a lethal dose, it stops feeding altogether. This ensures there is more bait available for other cockroaches to feed upon to better ensure the success of your treatment in even the most difficult of situations.
- ✔ **A natural insect toxin;** Abamectin is nature's solution to pest control problems. A natural insect toxin derived from fungus, BLATTATHOR can be used in the most sensitive of accounts, plus it is used at a very low rate.
- ✔ **Universal Design** Syringes fit all standard cockroach bait guns. Recommended for use with the ACCUTHOR GEL GUN.

BLATTATHOR PRODUCT DETAILS

- Active Ingredient:** 0.5 g/kg abamectin
- Insecticide Group:** Abamectin is a natural fermentation product of the soil bacterium *Streptomyces avermectinius*
- Formulation Type:** Unique 'colourless' clear cockroach gel
- Pests Controlled:** Cockroaches
- Pack Size/ Code:** 4 x 30 g tubes (CHEBG1000)

PERFORMANCE

Baits need to be applied close to where the cockroaches are already feeding and harbouring. Therefore, the first step in cockroach management must be a thorough inspection to find where the cockroaches are hiding and feeding. The more thorough you are at this stage the more likely you are to be successful in placing baits in the correct areas and avoiding a recall. BLATTATHOR only needs to be replaced when it is eaten or removed by cleaning.

DIRECTIONS FOR USE

Commercial, Industrial and Residential Buildings for the control of German and American cockroaches. Apply as a 3 mm to 6 mm diameter bait spot. Use the larger bait spot for American cockroaches. Apply 12-24 bait spots for a 30 m² treatment area for heavy infestations and 4-6 bait spots for a 30 m² treatment area for light infestations. For Routine/Maintenance Treatments Ensystex recommends the use of BLATTATHOR Gel Cockroach Bait with abamectin to protect against resistance. With its Multimode Activity BLATTATHOR Gel is a true Resistance Fighter.

BLATTATHOR™ ULTRA

SUPERSONIC COCKROACH GEL

Ultra Fast Kill and Elimination of pest cockroaches, including nymphs.



BLATTATHOR ULTRA KEY FEATURES

- ✓ **Clear 'colourless' gel formulation;** BLATTATHOR ULTRA ensures the utmost discretion without the unsightly dirty brown spots left by other gel baits.
- ✓ **Supersonic knockdown;** with its *Viral Feed Through Effect™* BLATTATHOR ULTRA showed quicker control against comparable gel baits.
- ✓ **Highly palatable;** Don't let BLATTATHOR ULTRA's clear colour fool you. It's unique blend of several highly palatable cockroach foods and proprietary feeding attractants combine to ensure that cockroaches readily feed, giving you great results.
- ✓ **Professional strength;** Fuelled by fipronil at 0.5 g/kg BLATTATHOR ULTRA ensures cockroaches start to vanish quickly, meaning greater customer satisfaction and fewer call-backs.

BLATTATHOR ULTRA PRODUCT DETAILS

- Active Ingredient:** Professional strength 0.5 g/kg fipronil
- Insecticide Group:** Fipronil is a broad spectrum phenyl pyrazole insecticide that disrupts the insects central nervous system by blocking the passage of chloride ions through the GABA receptor and glutamate-gated chloride (GluCl) channels, components of the central nervous system
- Formulation Type:** Unique 'colourless' clear cockroach gel
- Pests Controlled:** Cockroaches
- Pack Size/ Code:** 4 x 30 g tubes (CHEBG1002)
- Resistance Group:** 2B

PERFORMANCE

Place BLATTATHOR ULTRA bait as close as possible to cockroach harbourages. Place bait spots into cracks and crevices away from where they are likely to be removed by cleaning.

DIRECTIONS FOR USE

For German and American cockroaches in Commercial, Industrial and Residential Buildings. Apply as a 2 mm to 4 mm diameter bait spot. Use the larger bait spot for American cockroaches.

Apply 12-24 bait spots for a 30 m² Treatment area for heavy infestations and 4-6 bait spots for a 30 m² treatment area for light infestations.



CULITHOR™

GRANULAR MOSQUITO GROWTH REGULATOR

CULITHOR uniquely uses our *Intelligent Granular Micro-encapsulation Technology™* to provide controlled, long-term release of the active ingredient, an insect growth regulator for the prevention of adult mosquito emergence.

CULITHOR KEY BENEFITS

- ✓ **Water Release;** CULITHOR remains stable even in strong sunlight allowing use in tidal areas and on flood plains. It is only triggered into action when immersed in water.
TRIGGER 1 – Water release.
- ✓ **Targeted;** The low pH in the gut of the mosquito larvae triggers the release of the active ingredient from the pH Regulated Controlled-release Active Microcapsules™.
TRIGGER 2 – Mosquito Gut Release.
- ✓ **Long-term residual;** The Double Trigger Release mechanism can provide for control over several months.
- ✓ **Controlled Release;** The CULITHOR *Intelligent Granules™* slowly release the pH Regulated Controlled-release Active Microcapsules™ which gradually rise to the surface.
- ✓ **Good distribution in the water;** The CULITHOR *Intelligent Granules™* with pR-CRAM™ microcapsules ensure a good distribution of the active through the water body.
- ✓ **High Active Loading;** CULITHOR has three times more (S)-methoprene compared to any other granular product on the market. This means you use 1/3 as much per hectare. Meaning lower application and transport costs.
- ✓ **Easy Application;** CULITHOR can be applied with conventional ground or aerial application equipment. The high mass core of the CULITHOR *Intelligent Granules™* ensures targeted delivery, even in adverse weather conditions.
- ✓ **Controls all Mosquito Larvae;** CULITHOR prevents the emergence of adult mosquitoes, including common *Aedes*, *Anopheles*, *Culex* and *Ochlerotatus* spp. from treated sites. It works on both bottom feeding and surface feeding species.
- ✓ **Improved Safety;** The outer shell of the pH Regulated Controlled-release Active Microcapsules™ is non-digestible by mammals.

CULITHOR PRODUCT DETAILS

Active Ingredient:	12 g/kg (S)-methoprene
Insecticide Group:	Biopesticide – Insect Growth Regulator
Formulation Type:	Ready-to-use <i>Intelligent Granular Micro-encapsulation Technology</i>
Pests Controlled:	Prevents the emergence of adult mosquitos
Pack Size/ Code:	500 g (CHECL1000), 5 kg (CHECL1001), 20 kg (CHECL1002)
Resistance Group:	7A

PRODUCT PERFORMANCE

CULITHOR can be used in freshwater swamps and marshes, salt and freshwater lagoons, salt marshes, mangrove swamps, estuarine areas, woodland pools, or any natural water-holding features; in both open water situations or where water is obscured by vegetation. In fact anywhere where mosquito breeding is a problem.

CULITHOR works by mimicking the presence of natural juvenile hormone in the mosquito larvae. Consequently CULITHOR prevents the emergence of adult mosquitoes, including common *Aedes*, *Anopheles*, *Culex* and *Ochlerotatus* spp. from treated sites. Treated larvae continue to develop normally to the pupal stage after which they fail to emerge. CULITHOR has sufficient activity to be effective against existing broods when applied to any larval stage at recommended rates. Third and fourth larval instars are more susceptible to the effects of (S)-methoprene than early stage instars.

CYPERTHOR™

INSECTICIDE

The high performance, quality insecticide that combines the powerful residual action of an alternative pyrethroid active.



CYPERTHOR PRODUCT DETAILS

- ✔ **Withstands degradation by sunlight, heat & once dry is unaffected by rain;** To give you a better result and fewer call-backs.
- ✔ **Highest quality micro-fine suspension formulation;** This ensures CYPERTHOR stays in suspension in your tank longer to give you optimal results. More importantly it ensures the particles of alpha-cypermethrin penetrate the insect cuticle more effectively resulting in faster control.
- ✔ **High quality water-based suspension concentrate;** To give you improved residual performance, odourless and no visible residues.
- ✔ **No hydrocarbon solvents;** Which means no worries about staining, no odour and no damage to your equipment, seals or pumps.
- ✔ **Approved for use indoors and outdoors, in food handling premises, hospitals, etc;** To give you maximum flexibility in your use of CYPERTHOR.
- ✔ **Rapidly metabolised in plants and mammals;** Making it safe to use in even the most sensitive environments.

CYPERTHOR PRODUCT DETAILS

- Active Ingredient:** 50 g/L alpha-cypermethrin
- Insecticide Group:** Pyrethroid
- Formulation Type:** Microfine Suspension Concentrate
- Pests Controlled:** Cockroaches, spiders, ants, flies, fleas, silverfish
- Pack Size/ Code:** 5 L (CHECY1000)
- Resistance Group:** 3A

PERFORMANCE

CYPERTHOR contains alpha-cypermethrin which offers you an alternative pyrethroid formulation for use in your accounts. Different chemical isomers perform differently, and the blend in CYPERTHOR is designed to give you premium performance.

The high performance, quality insecticide that combines the powerful residual action of an alternative pyrethroid active whilst providing flush-out and knock down in the toughest situations.



DELTATHOR™

INSECTICIDE

The proven, high performance, quality insecticide that combines the most powerful residual action with the safety features you demand for long lasting control of Insects.

DELTATHOR PRODUCT DETAILS

- ✓ **Micro-fine Suspension Concentrate;**
Most suspension concentrates use particle sizes closer to 10 - 20 microns. DELTATHOR has a uniform particle size of less than 5 microns. The micro-fine particle size gives you faster kill effects on insects and spiders. This is because the smaller particles penetrate the insect's cuticle quicker for fast control.
- ✓ **Withstands degradation by sunlight, heat & once dry is unaffected by rain;** To give you a better result and fewer call-backs.
- ✓ **Highest quality suspension formulation;**
This ensures DELTATHOR stays in suspension in your tank longer to give you optimal results.
- ✓ **High quality water-based suspension concentrate;**
To give you improved residual performance and no visible residues.
- ✓ **No hydrocarbon solvents;** Which means no worries about staining, no odour and no damage to your equipment, seals or pumps.
- ✓ **Approved for use indoors and outdoors, in food handling premises, hospitals, etc;** To give you maximum flexibility in your use of DELTATHOR.
- ✓ **Rapidly metabolised in plants and mammals;**
Making it safe to use in even the most sensitive environments.

DELTATHOR PRODUCT DETAILS

- Active Ingredient:** 10 g/L deltamethrin
Insecticide Group: Pyrethroid
Formulation Type: Micro-fine Suspension Concentrate
Pests Controlled: Cockroaches, spiders, ants, fleas, silverfish, bed bugs, bird mites, carpet beetles, clothes moths, stored product insects, quarantine pests, five-spined bark beetle, furniture beetles, auger beetles, powderpost beetles, flies and mosquitos
Pack Size/ Code: 5 L (CHEDE1000)
Resistance Group: 3A

DELTATHOR is the ideal product for treating pests of timber and stored product insects.

PERFORMANCE

DELTATHOR contains deltamethrin which remains arguably the most active of all the residual pyrethroids. This is because the deltamethrin in DELTATHOR is a pure, single isomer blend (Simplistically, an isomer is how the chemical is shaped). Different chemical isomers perform differently, and the blend in DELTATHOR is the most pure and insecticidally active giving you premium performance.

Deltamethrin has been registered in Australia for use by Pest Management Professionals since 1984, and personnel at Ensystex have been associated with the development and support of deltamethrin since before then, so you can be sure of quality advice and care. The high performance, quality insecticide that combines the powerful residual action of an alternative pyrethroid active whilst providing flush-out and knock down in the toughest situations.

DIPHTHOR™ DUO

INSECTICIDE



Insecticide for public health.

A ULV or Fogging spray for FAST action in the knockdown and kill of flying insect pests and cockroaches, DIPHTHOR DUO is simply the best for integrated pest management campaigns.

DIPHTHOR DUO KEY FEATURES

- ✓ **Unique Formulation – mixes with oil or water;** Can be used for all situations due to flexible formulation options.
- ✓ **Extremely rapid knockdown and control of flying insect pests and cockroaches;** To give you a better result and fewer call-backs.
- ✓ **Packaged in easy pour, fluorinated, plastic containers;** This make it more convenient to use DIPHTHOR and enables you to measure required volumes more easily without spillage.
- ✓ **Highly active pyrethroid;** This ensures low application rates, minimal risk and highly successful control programs.
- ✓ **Label worded to allow for flexible application rates;** This puts you in total control and ensures DIPHTHOR DUO provides you with optimal levels of control in all types of application equipment, from ULV to thermal fogging to hand spray.
- ✓ **Scientifically proven and developed for use throughout Australia and SE Asia;** DIPHTHOR DUO has been independently tested to give you the confidence you need for large public health control programs.
- ✓ **Approved for use indoors and outdoors, around refuse tips, agricultural buildings, etc;** DIPHTHOR DUO is designed for use in applications in public health pest management programs, local council and Defence force programs and in the private sector. Wherever the pests are a problem, DIPHTHOR DUO is available.

DIPHTHOR DUO PRODUCT DETAILS

- Active Ingredient:** 25 g/L cypermethrin
- Insecticide Group:** Pyrethroid
- Formulation Type:** Space Spray
- Pests Controlled:** Cockroaches, flies, biting midges and mosquitos
- Pack Size/ Code:** 5 L (CHED11004)
- Resistance Group:** 3A

PERFORMANCE

DIPHTHOR DUO is designed to be used at significantly lower levels of active ingredient than other competing products and still provide optimum control. This is due to the high potency of the active ingredient used in DIPHTHOR DUO. This means your public health pest management programs are much more cost effective when you use DIPHTHOR DUO and it means reduced insecticide load in the environment.

In independent Australian University trials, DIPHTHOR DUO provided 100% kill in all situations.

DEPOSITION
OF EGGS

EGG

STAGE 1
LARVAL

ADULT
FLY

STAGE 2
LARVAL

www.ensystex.com.au/exothor

EXOTHOR™

INSECT GROWTH REGULATOR

Actively stop time on fly, flea & cockroach development.

EXOTHOR KEY FEATURES

- ✓ **Insect Growth Regulator;** prevents adult emergence of house flies, fleas and cockroaches.
- ✓ **Contains the active ingredient diflubenzuron;** an insect growth regulator which effects chitin synthesis in insects.
- ✓ **Selective mode of action;** provides a high level of safety to higher order vertebrates (like mammals) and has strong residual activity.
- ✓ **Inevitable;** slow but inevitable population decline in target pests.
- ✓ **The ONLY Water Dispersible Granule;** for prevention of adult emergence. Easy to handle with less risk of spillage when compared to liquid products.
- ✓ **Can be mixed with water** for spraying for cockroaches, fleas or house flies.
- ✓ **Preventive;** can be sprinkled into manure, etc for the prevention of emergence of adult house flies.
- ✓ **Compatible with most Ensystem aduicticides;** including ATTRATHOR™, MAXXTHOR™ and BITHOR™
- ✓ **The first product registered in Australia;** using diflubenzuron for the control of public health pests.

EXOTHOR PRODUCT DETAILS

- Active Ingredient:** 200 g/kg diflubenzuron
Insecticide Group: Insect Growth Regulator
Formulation Type: Water Dispersible Granule
Pests Controlled: For the prevention of adult emergence of house flies, fleas and cockroaches
Pack Size/ Code: 500 g (CHEEX1000)
Resistance Group: 15

PERFORMANCE

EXOTHOR inhibits the formation of N-acetylglucosamine, leading to reduced levels of chitin in the cuticle. Cuticular elasticity and firmness are directly affected. The imperfections in the cuticle are most evident at ecdysis (moulting) and lead to abortive moulting.

Thus EXOTHOR causes the insect to die in the immature stage (nymphal or larval stage) since a new exoskeleton cannot be formed. In addition EXOTHOR stops normal embryonic development.

HYMENOPTHOR™ ULTRA

GRANULAR ANT & COCKROACH BAIT

Targeted to kill all species of ants and cockroaches, including nymphal stages.



HYMENOPTHOR ULTRA KEY FEATURES

- ✓ **Eliminates;** all species of ants and cockroaches, including large and small cockroach species.
- ✓ **Liquid Oil Phase Release™;** technology ensures uptake of the fipronil, and produces results equal to, or better than, those of gel baits for cockroaches - including nymphal stages.
- ✓ **Viral Feed Through Effect™;** of fipronil further ensures its rapid spread throughout ant colonies. Since fipronil is a quick acting insecticide, it is important to use it at a low rate to ensure it is spread throughout the entire colony.
- ✓ **Advanced Bait Technology™;** provides a unique composite of proteins, sugars and oils to target sugar feeding species, oil feeding species and protein feeding species.
- ✓ **Ultra Strong;** Performance is particularly spectacular when targeting cockroach nymphal stages, the most difficult life-stage to control.

HYMENOPTHOR ULTRA PRODUCT DETAILS

Active Ingredient:	0.1 g/kg fipronil
Insecticide Group:	Phenylpyrazole
Formulation Type:	Granular bait - ready-to-use
Pest Controlled:	Ants and cockroaches, all species
Pack Size/ Code:	450 g (CHEHU1000)
Resistance Group:	2B

PERFORMANCE

As a granular bait, efficacy is enhanced by the ant's feeding behaviour. Worker ants are generally liquid feeders and cannot ingest solid baits. So they use their legs and mouthparts to physically carry the solid bait granules back to the nest for the larvae to digest and feed to the colony.

Therefore the bait is not diluted when it reaches the nest. In contrast, with liquid or gel baits, the ants ingest the bait and then pass it through to nest mates by trophallaxis, which means there is some dilution of the toxicant as it is passed from one ant to the next. More importantly though, with the Liquid Oil Phase Release™ technology, the workers are also able to feed directly on the HYMENOPTHOR ULTRA and receive a toxic dose of the active, as well as feeding on the pre-digested liquid from the larvae.

Cockroaches have an exceptionally high preference for solid based foods, with bread ranking higher than most cockroach gels as a preferred food. HYMENOPTHOR ULTRA optimally satisfies cockroaches preference for a cereal based diet leading to aggressive feeding and a speed of kill better than that achieved with gel baits. The Liquid Oil Phase Release ensures the fipronil is readily digested by the cockroaches.



HYMENOPTHOR™ ULTRA

LIQUID ANT KILLER

Fipronil Liquid for the ULTRA fast kill and elimination of problem ants.

HYMENOPTHOR ULTRA KEY FEATURES

- ✓ **Non-repellent to ants;** so they are totally unaware of its presence.
- ✓ **Low application rates;** combined with the unique ULTRATHOR formulation reduces the risk of run-off.
- ✓ **Fast elimination;** of ants invading buildings together with highly effective, long-term residual control.
- ✓ **Viral Transfer Effect™;** this unique mode of action allows HYMENOPTHOR ULTRA Liquid Ant Killer to rapidly spread throughout the ant colony, the same way as a virus spreads through the internet, infecting all in its path.
- ✓ **Uses Ensystex's Microbial Protection Blend™;** Which uniquely provides protection against both gram-positive and gram-negative bacteria, thus ensuring the highest quality product at all times.

HYMENOPTHOR ULTRA PRODUCT DETAILS

Active Ingredient:	100 g/L fipronil
Insecticide Group:	Phenylpyrazole
Formulation Type:	Micro-fine, water-based, suspension concentrate
Pest Controlled:	Ants
Pack Size/ Code:	1 L (CHEHU1002)
Resistance Group:	2B

PERFORMANCE

When ants contact the HYMENOPTHOR ULTRA DEFENCE ZONE™, they pick up the molecules of fipronil. Blissfully unaware of the presence of the HYMENOPTHOR ULTRA, the ants will quickly die. Those ants that do not remain in the Defence Zone usually survive long enough to transfer the HYMENOPTHOR ULTRA to other ants in the colony through grooming.

HYMENOPTHOR ULTRA is toxic to ants by contact or ingestion. It causes death by disrupting their nervous system. It binds to three types of chloride-channels on the membranes of insect neurons, preventing calcium ion influx into the cell. One of these channels is controlled by the neurotransmitter gamma aminobutyric acid (GABA) and the other two are controlled by glutamate. The presence of three different target sites accounts for HYMENOPTHOR ULTRA's high potency against ants.

MAGNATHOR™

MAGNETIC COCKROACH BAIT WITH MAGTHANITE®

Take a magnetic approach to faster cockroach control.



MAGNATHOR KEY FEATURES

- ✓ **Novel;** MAGNATHOR™ MAGNETIC COCKROACH BAIT is a totally new approach to cockroach control, a magnetic, dry, flowable bait.
- ✓ **Highly Effective;** MAGNATHOR delivers results equal to or better than gel baits.
- ✓ **Faster kill;** MAGNATHOR trials show 100% mortality of cockroach populations after just 24 hours.
- ✓ **Magnetic Attraction;** The foraging cockroach is lured to the MAGNATHOR Target Zone™ by the attractant bait. However the cockroach doesn't need to eat or even touch the bait. As soon it approaches the MAGNATHOR Target Zone the magnetic properties of the magnetic component, **MAGTHANITE**, cause the dry powder to be drawn to, and adhere to, the cockroach's exoskeleton.
- ✓ **Viral Transfer Effect™;** The foraging cockroach returns to its harbourage where it spreads the MAGNATHOR to its nest mates through both magnetic attraction and grooming.
- ✓ **Active and Passive Kill;** The MAGNATHOR powder enters the cockroaches' bodies through either ingestion or contact action through the soft membranes of the exoskeleton. When compared with conventional dusts, the magnetic properties of MAGNATHOR deliver superior results.
- ✓ **Ultra Killing Power;** MAGNATHOR is powered by fipronil.

MAGNATHOR PRODUCT DETAILS

- Active Ingredient:** 0.5 g/kg fipronil
- Insecticide Group:** Phenylpyrazole
- Formulation Type:** Dry, flowable powder bait with **MAGTHANITE**
- Pests Controlled:** Cockroaches
- Pack Size/ Code:** 4 x 30 g tubes (CHEMG1000)
- Resistance Group:** 2B

PERFORMANCE

MAGNATHOR employs the power of paramagnetism. This is the weak magnetic attraction shown by insect exoskeletons. Insect chitin shows a clear attraction to ferromagnetic particles.

The magnetic powder, **MAGTHANITE**, used in MAGNATHOR is a blend of Myranite and strontium ferrite. Research has supported the attraction between this ferromagnetic powder and insect cuticles. Tests by Smith and Moores at Rothamsted Experimental Station, UK showed that cockroaches passing over a residual deposit of **MAGTHANITE** picked up an average of 56% more particulate material than those passing over a deposit of inert dust. In a further test they found that 250% more **MAGTHANITE** was transferred between cockroaches.

These paramagnetic processes are exploited by MAGNATHOR to provide rapid control of cockroach populations.



MAXXTHOR™

TERMITICIDE & INSECTICIDE

The unique solution for indoors & outdoors.
General pest control and termite work.
Powerful performance, odourless, professional strength, water-based and long-term residual.

MAXXTHOR KEY FEATURES

- ✓ **A unique professional strength, water-based formulation containing 100 g/L bifenthrin that is priced to perform;** This gives you premium quality at a price you can truly afford.
- ✓ **MAXXTHOR is labelled for the long-term control of a wide range of pests including urban insect pests, vectors, spiders, ticks, turf insects and termites;** So when you carry MAXXTHOR with you it is a total solution for all your pest control needs.
- ✓ **MAXXTHOR Mosquito Protection Zone;** A Special program providing your clients with up to eight weeks of freedom from mosquitoes and other biting insects.
- ✓ **Odourless;** No need to worry about smells. Since this is a water-based product it is gentle on the nose.
- ✓ **Water-based;** No staining, no corrosion of your equipment.
- ✓ **Tested in Australian soils and through reticulation systems;** Since MAXXTHOR was the primary registrant we had to prove its performance in a wide range of soils. So you can be sure it offers the best quality termite barrier possible.
- ✓ **Withstands degradation by sunlight, rain and heat;** So you have fewer call backs.
- ✓ **Non-sensitising;** This means you are less likely to experience the skin tingling associated with most pyrethroids.
- ✓ **Safe to plants and rapidly metabolised by plants and animals;** In fact MAXXTHOR is designed for direct application to foliage. And the active ingredient is in widespread use on a wide range of food crops.
- ✓ **Approved for use indoors and outdoors, in the most sensitive areas;** So you can take it anywhere with you.
- ✓ **No hydrocarbon solvents;** So you have no worries about staining, odours, or equipment corrosion.
- ✓ **Approved for both pre-construction and post-construction termite management;** A total termite solution.
- ✓ **Long term residual;** There is no product on the market with a longer label claim for termite management. MAXXTHOR claims protection for ten years or more.
- ✓ **Supplied in fluorinated white plastic containers;** This prevents the bifenthrin bleeding through the pack leading to the pack distorting over time and the bifenthrin leaching out.
- ✓ **Contains Ensystex's unique Microbial Protection Blend™** to ensure the product remains fresh out in the field and in the back of your truck.

MAXXTHOR PRODUCT DETAILS

- Active Ingredient:** 100 g/L bifenthrin
- Insecticide Group:** Pyrethroid
- Formulation Type:** Micro-fine Suspension Concentrate (Water-based)
- Pest Controlled:** Controls a wide range of pests as per the product label
- Pack Size/ Code:** 5 L (CHEMX2010)
- Resistance Group:** 3A

PERFORMANCE

MAXXTHOR also comes with the *Ensystex Ten Year Performance Guarantee.**

MAXXTHOR™ DEUCE

TERMITICIDE & INSECTICIDE

Water-based, micro-fine suspension concentrate that is double the strength of other bifenthrin products.



MAXXTHOR DEUCE KEY FEATURES

- ✓ **Double Strength;** MAXXTHOR DEUCE is a double-strength version of Ensystem's best-selling MAXXTHOR.
- ✓ **Containing 200 g/L bifenthrin;** MAXXTHOR DEUCE is double the strength of other bifenthrin products.
- ✓ **A unique water-based solution;** It is more effective for the control of termites and killing a wide range of other pests.
- ✓ **Safer;** Water based solution is safer to use.
- ✓ **Range of application;** MAXXTHOR DEUCE has a large range of application techniques, including trenching, rodding, reticulation and spraying.
- ✓ **Optimised;** Non-staining, odourless, has low sensitisation and is non-allergenic.
- ✓ **Guaranteed;** Covered by Ensystem's Ten Year Performance Guarantee*, or we will pay for any retreatment and repairs.
- ✓ **Uses Ensystem's Microbial Protection Blend™;** Which uniquely provides protection against both gram-positive and gram-negative bacteria, thus ensuring the highest quality product at all times.

MAXXTHOR DEUCE PRODUCT DETAILS

Active Ingredient:	200 g/L bifenthrin
Insecticide Group:	Pyrethroid
Formulation Type:	Micro-fine Suspension Concentrate (Water-based)
Pest Controlled:	Controls a wide range of pests as per the product label
Pack Size/ Code:	5 L (CHEMD1000)
Resistance Group:	3A

PERFORMANCE

With less to store, carry and use, this efficient product also comes with the *Ensystem Ten Year Performance Guarantee**.

* conditions apply.



MAXXTHOR™

SAND GRANULE INSECTICIDE

Penetrates deep for more effective control. The perfect choice for the toughest outdoor jobs. No odour, High performance, and Long-term residual action.

MAXXTHOR SAND GRANULE INSECTICIDE KEY FEATURES

- ✓ **Heavy sand granule formulation penetrates the densest foliage to get the insecticide to where the pests are;** This makes MAXXTHOR Sand Granule Insecticide the optimal product for external control of ants, fleas and ticks in gardens, lawns, around BBQ's, the perimeter of properties, etc.
- ✓ **Withstands degradation by sunlight & heat;** To give you better results and fewer call-backs.
- ✓ **Not affected by rain;** In fact MAXXTHOR Sand Granules can be activated by spraying with water. This also means you can apply it in rainy weather so there is no need to cancel jobs due to inclement weather.
- ✓ **Not noticeable on most target surfaces;** Your clients see little evidence of your actual treatment, simply a reduction in their ant problems.
- ✓ **Non-sensitising;** No skin sensitivity issues under normal usage.
- ✓ **Safe to plants;** Can be safely applied to plants, lawns, shrubs for tick or ant control in particular, without any adverse effects.
- ✓ **Can be applied around Exterra Monitoring Stations;** This can help you resolve problems in-ground with ants infesting your EXTERRA program. This is the only granular product approved for this usage. It can also be placed underneath the EXTERRA Termite Baiting Station. NB DO NOT apply directly to Station or interceptors.
- ✓ **Not classified as a scheduled poison;** so you can use MAXXTHOR Sand Granule Insecticide with confidence in even the most sensitive environments.
- ✓ **No mixing, no dilution;** makes MAXXTHOR Sand Granule Insecticide quick and convenient to use and speeds up your treatment process.
- ✓ **Rapidly metabolised in plants and mammals;** Making it safe to use in even the most sensitive environments.

MAXXTHOR SAND GRANULE INSECTICIDE PRODUCT DETAILS

Active Ingredient:	2 g/kg bifenthrin
Insecticide Group:	Pyrethroid
Formulation Type:	Sand granules
Pests Controlled:	Ants, fleas, ticks and lawn pests
Pack Size/ Code:	4 x 5 kg (CHEBI1000)
Resistance Group:	3A

PERFORMANCE

MAXXTHOR SAND GRANULE INSECTICIDE is a pyrethroid insecticide. MAXXTHOR SAND GRANULE INSECTICIDE was developed and formulated specifically for professional pest management treatments. Ideal for use as a repellent barrier on lawns, garden beds, in between pavers or any other external situation.

MAXXTHOR SAND GRANULE INSECTICIDE will reactivate each time moisture is introduced and remain active for longer. Since BITHOR is a pyrethroid insecticide it displays relatively low levels of mammalian and avian (bird) toxicity.

MAXXTHOR™ TURBO

TARGETED INSECTICIDE

Turbo charge your clients into the future, today.
STOP Callbacks, Increase client satisfaction
through Superfast knockdown, Long term residual
performance, Resistance Fighter.



MAXXTHOR TURBO KEY FEATURES

- ✓ **Revolutionary;** new suspo-emulsion formulation combines three active ingredients together to work better than anything you have experienced before.
- ✓ **Turbo Kill;** the turbo charged oil phase enters rapidly through the insect's spiracles; allowing the oil phase insecticides to instantly halt the insect nervous system.
- ✓ **Long Term;** The micro-particles of bifenthrin are evenly spread by the TURBO organic phase ensuring long-term protection.
- ✓ **Resistance Fighter;** Piperonyl butoxide works to inhibit the enzymes that breakdown and detoxify pyrethroids, thus restoring their effectiveness against resistant or tolerant insects. Moreover it has also been proven to delay resistance development. Piperonyl butoxide is a specific inhibitor of microsomal oxidases, and has also been shown to inhibit resistance-associated esterases. Both these modes of action serve to enhance and potentiate the power of MAXXTHOR TURBO to ensure you get the best results.

MAXXTHOR TURBO PRODUCT DETAILS

- Active Ingredient:** 100 g/L bifenthrin, 10 g/L imiprothrin, 120 g/L piperonyl butoxide
- Insecticide Group:** Synergised Pyrethroid
- Formulation Type:** Suspo-emulsion
- Pests Controlled:** Controls a wide range of pests as per the product label
- Pack Size/ Code:** 1 L (CHEMT1001)
- Resistance Group:** 3A

PERFORMANCE

A real problem with pyrethroid insecticides is the way they can scatter the insects, especially cockroaches. This in turn can lead to a spread of the problem. Now MAXXTHOR TURBO provides a total solution through the super fast action of imiprothrin, and its exceptional activity against cockroaches.

This speed of action arises as a consequence of imiprothrin acting much faster at the target site, the insect nervous system, than any other pyrethroid. When imiprothrin is applied directly to the cockroach nervous system, there is a rapid decline in spontaneous firing, followed by the rapid and complete disappearance of any charge.

PERMETHOR™

INSECTICIDAL DUST

The finest dust for professional pest managers. Your Number One choice for ready-to-use, broad spectrum control in roofs and wall voids. Flows deeper into cracks and voids to give you optimal results.



PERMETHOR KEY FEATURES

- ✓ **Exceptionally light dust formulation;** to flow further and deeper into cracks, crevices and voids where pests are found. This ensures you are easily able to get the product where it will be most effective.
- ✓ **Odourless;** This means that, when correctly applied, your clients see little evidence of your actual treatment, simply a reduction in their pest problems.
- ✓ **Wide use;** A broad label that even includes control of European wasps and feral honey bees so you can target the broadest spectrum of pests.
- ✓ **Withstands heat;** very low degradation in high temperatures to give you better results and fewer call-backs.
- ✓ **Finer dust;** to give you superior coverage to apply the finest of coatings to surfaces. The finer the dust coating the more likely the pests are to make contact and pick-up the insecticidal deposit providing you with long term effective control.
- ✓ **Non-sensitising;** under normal usage conditions you can expect no sensitivity issues.
- ✓ **Long residual activity;** of up to 6 months or more so you can provide your clients with long-term insect control and minimise call-backs.

PERMETHOR PRODUCT DETAILS

Active Ingredient:	10 g/kg permethrin
Insecticide Group:	Pyrethroid
Formulation Type:	Ready to use dust
Pests Controlled:	Cockroaches, silverfish, ants, fleas, carpet beetles, bed bugs, spiders, bird mites, hide beetles, mushroom sciarid flies, potato moths, subterranean termites, European wasps and feral honey bees
Pack Size/ Code:	10 kg (CHEPE1000)
Resistance Group:	3A

PERMETHOR is a pyrethroid insecticide. PERMETHOR was developed and formulated specifically for professional pest managers.

PERFORMANCE

PERMETHOR dust is ideal for areas where liquid based formulations are not suitable. This includes large voids or areas where there is a risk of corrosion or spray drift to electrical equipment. For best results in roof or wall voids apply using a power duster. PERMETHOR is most effective when a fine coating only is applied. Ensure you use the lightest application of dust and avoid "mounds" of dust as insects will not pass through these.

PERMETHOR is also ideal for use as a flushing agent during inspections to identify cockroach and other pest harbourages. For the most effective control use PERMETHOR in association with a liquid spray to other pest harbourages and surfaces using products such as DELTATHOR, CYPERTHOR or MAXXTHOR.

PROTHOR™

TERMITICIDE

The Professional Standard for protecting homes against termites.



PROTHOR KEY FEATURES

- ✓ **Innovative Formulation;** Ensystem have taken the formulation of imidacloprid as a termiticide to the next level. With a micro-fine suspension concentrate ensuring particle sizes of less than 5 microns for better soil penetration and viral transfer. PROTHOR is also blended to protect it better from degradation in your vehicles.
- ✓ **PROTHOR is undetectable;** Some soil treatment termite control products don't kill termites, instead they repel them. These products are effective when applied in a perfect and continuous gap-free termite barrier, but if there are any gaps in the barrier through which termites can enter, its 'hello termites'.
- ✓ **Minimal impact on the environment and you;** Studies have shown that during applications of PROTHOR, airborne residues of PROTHOR in the structure are minimal. This means it is safe to remain at home while the PROTHOR Termite Defence Zone is being applied under and around your home. This is unlike some other termiticides which require you to vacate your home while they are being applied.
- ✓ **PROTHOR is easy on the nose;** In fact PROTHOR is almost odourless since it is a water-based product.
- ✓ **Non-sensitising;** This means no unpleasant sensations as often caused by other termiticides.
- ✓ **Safe to plants and rapidly metabolised;** Indeed the active in PROTHOR is widely used on agricultural food crops, in orchards, nurseries and in products applied directly to pets.
- ✓ **Approved for post-construction and pre-construction treatments;** For pre-construction PROTHOR should be applied through a reticulation system.
- ✓ **Employs Ensystem's unique Microbial Protection Blend™;** to ensure the product remains fresh out in the field and in the back of your truck.

PROTHOR PRODUCT DETAILS

- Active Ingredient:** 200 g/L imidacloprid
- Insecticide Group:** Neonicotinoid
- Formulation Type:** Water-based, micro-fine suspension concentrate
- Pests Controlled:** Termites
- Pack Size/ Code:** 3 L (CHEPR1000)

PERFORMANCE

When applied to soil at recommended rates, PROTHOR is undetectable by termites as they tunnel through it. Since termites can't detect PROTHOR treated soil, they can't avoid it and are killed by their contact with it. We call this the PROTHOR Termite Defence Zone™.

When termites unknowingly tunnel through PROTHOR treated soil, they accumulate PROTHOR on the outside of their bodies. PROTHOR does not immediately kill termites exposed to it. The delayed toxicity of PROTHOR allows contaminated termites to interact with non-exposed termite nestmates. This interaction can take place over three days. This ensures greater transfer and kills more termites than similar products. Non-affected termites that clean and groom other termites recently exposed to PROTHOR are themselves secondarily exposed and killed. This transmission of PROTHOR from termite to termite which cannot be detected or avoided by termites is referred to as the PROTHOR Viral Effect™.

The active ingredient in PROTHOR has some very special and unique soil binding properties. Chemists call these properties Hysteretic Binding. This unique chemistry means that PROTHOR is relatively slow to bind to soil particles, but once it does bind, it grips very tightly to ensure the Termite Defence Zone remains in place for a long time; to keep on killing termites. This Hysteretic binding effect is important because it ensures that the PROTHOR Defence Shield™ created around your clients home is as complete and continuous as possible.



ULTRATHOR™

WATER-BASED TERMITICIDE

ULTIMATE TERMITE SOLUTION Guaranteed to provide protection against termite entry for up to 8 years or more*.

ULTRATHOR KEY FEATURES

- ✔ **Non-repellent to termites;** so they are totally unaware of its presence in the soil.
- ✔ **Absorbs tightly to soil, has low solubility in water, and a low vapour pressure;** as do its environmental degradates. Low application rates, combined with the unique ULTRATHOR formulation also reduces the risk of run-off.
- ✔ **Fast elimination;** of termites attacking buildings together with highly effective, long-term residual control.
- ✔ **Viral Transfer Effect™;** this unique mode of action allows ULTRATHOR to rapidly spread throughout the termite colony, the same way a virus spreads through the internet, infecting all in its path.

ULTRATHOR PRODUCT DETAILS

- Active Ingredient:** 100 g/L fipronil
- Insecticide Group:** Phenylpyrazole
- Formulation Type:** Micro-fine water-based suspension concentrate
- Pests Controlled:** Termites
- Pack Size/ Code:** 3 L (CHEUL1000)
- Resistance Group:** 2B

PERFORMANCE

When termites approach the ULTRATHOR Termite Defence Zone™, they pick up the molecules of fipronil. Those termites that remain in the *Termite Defence Zone*, blissfully unaware of the presence of ULTRATHOR, will quickly die. Those termites that do not remain tunnelling into the ULTRATHOR Termite Defence Zone usually survive long enough to transfer the ULTRATHOR to other termites in the colony through grooming.

ULTRATHOR is toxic to termites by contact or ingestion. It causes death to termites by disrupting their nervous system. It binds to three types of chloride-channels on the membranes of insect neurons, preventing calcium ion influx into the cell. One of these channels is controlled by the neurotransmitter gammaaminobutyric acid (GABA) and the other two are controlled by glutamate. The presence of three different target sites accounts for ULTRATHOR's high potency against termites.

*Visit www.ULTRATHOR.com.au to learn more about our 8 year guarantee.

VECTOTHOR™ FLY BAIT

ATTRACTION PROVES DEADLY FOR FLIES



VECTOTHOR FLY BAIT OVERVIEW

This fly bait is not only effective in eliminating flies, but has a versatile array of applications to suit many and varied indoor and outdoor applications.

VECTOTHOR FLY BAIT KEY FEATURES

- ✔ **Scientifically tested;** The formula of sugars and sex attractant contained in VECTOTHOR Fly Bait has been scientifically tested to prove its effectiveness in attracting flies.
- ✔ **Irresistible;** Flies are irresistibly drawn to the surface where they are knocked down.
- ✔ **Attractive;** VECTOTHOR granule fly bait for dry surfaces is blue in colour, following scientifically proven data indicating it to be the most effective colour for attracting flies.
- ✔ **Water Dispersible;** Formulated as a Water Dispersible Granule (WDG) so that it may be used directly in the granule formulation as a fly bait, diluted with a small amount of water for making a paste, or diluted with a larger volume of water to allow it to be quickly sprayed on to walls and other surfaces on which flies alight.

VECTOTHOR FLY BAIT PRODUCT DETAILS

- Active Ingredients:** 5 g/kg imidacloprid; 1 g/kg (z)-9-tricosene
- Pesticide Group:** Neonicotinoid
- Formulation Type:** Ready to use granular bait and water dispersible granule (WDG)
- Pests Controlled:** Flies
- Pack Size/ Code:** 500 g (VECB1000)

PERFORMANCE

Performance is optimal when it is used as a dry granular bait. This form boasts a unique blue colour and optimised release of the female sex pheromone. Overseas research has proven flies show greater attraction to certain colours. VECTOTHOR FLY BAIT's blue colour was significantly more effective than all other colours tested. VECTOTHOR FLY BAIT offers superior control around the exterior of buildings and in poor hygiene areas around garbage disposal areas; and it complements the use of the class-leading VECTOTHOR Electronic Fly-Killers developed by Ensystex for use indoors and in HACCP environments.

EXTERRA™

TERMITE COLONY ELIMINATION

The World's Number One Termite Baiting System, Total Elimination of Termites – GUARANTEED.

EXTERRA KEY FEATURES

- ✓ **Environmentally friendly;** EXTERRA is different. A truly safe, environmentally friendly way to eliminate termites, EXTERRA uses a termite's natural instincts against them, eliminating the attacking termites AND their whole colony.
- ✓ **Total Security;** Protects from the invasion of termites, continually. Even after the colony is eliminated, EXTERRA Stations guard using the natural power of CO₂, monitoring for future invasions without the ongoing need to reapply chemicals. EXTERRA provides a long term termite solution that's easy on both you and the environment.
- ✓ **EXTERRA and Australian Wildlife Conservancy;** Partners for Life. When you install the environmentally friendly EXTERRA Termite Interception and Baiting System, you will be supporting Australian Wildlife Conservancy.
- ✓ **REQUIEM™;** is the most palatable termite bait in the world, it is truly irresistible to termites. Housed within the EXTERRA Station, it is this greatly superior palatability that makes EXTERRA the number one system in the world.
- ✓ **EXTERRA;** is safe for you, your family, pets and nature. EXTERRA focuses on total termite colony elimination without chemicals, guaranteeing the most effective results.
- ✓ **FOCUS Termite Attractant™;** EXTERRA is the only system that uses naturally generated CO₂ to attract the termites into the Stations to guarantee quicker interception and better results.
- ✓ **Larger Stations;** preferred by termites to further improve performance.

EXTERRA PRODUCT DETAILS

- Active Ingredient:** 1.0 g/kg chlorfluazuron
Insecticide Group: Insect Growth Regulator
Formulation Type: Cellulose based bait
Pests Controlled: Subterranean termites

PERFORMANCE

In-ground Stations containing eucalypt timber interceptors are placed in-ground to intercept foraging termites and protect the property. Above-ground Stations are the preferred approach when termites are already active in the property. REQUIEM™ Termite Bait is placed in the sealed Station when it is installed. Above-ground Stations speed up the process of colony elimination. After the termite colony is eliminated, the Above-ground Stations are removed.

When the termites are intercepted, they are easily detected in the EXTERRA Stations. The unique (patented) design allows for termites to be seen without disturbing them. And the termites are not disturbed when the REQUIEM Termite Bait is added either. REQUIEM Termite Bait is highly palatable and consumed in preference to timber. In fact, termites can't resist REQUIEM, leading to the colony's quick demise.

NOVITHOR™

THE PESTICIDE FREE TERMITE PROTECTION SYSTEM

Termites will be turned away from your property every time.



NOVITHOR KEY FEATURES

- ✓ **Pesticide Free;** The NOVITHOR System consists of three pesticide free elements which, in combination, ensure any construction type can be securely protected.
 - NOVITHOR TERMITE PROOFING RESIN
 - NOVITHOR TERMITE PROOF CEMENTITIOUS PARGE
 - NOVITHOR TERMITE PROOF FLEXI-GEL
- ✓ **Impenetrable;** Creates an impenetrable barrier to prevent the ingress of subterranean termites.
- ✓ **Pre or Post construction;** All three elements work by creating an impregnable barrier that termites cannot chew through or damage, and that is resistant to their secretions. In fact, NOVITHOR Termite Proofing Resin and NOVITHOR Termite Proof Cementitious Parge are granite-like when set.
- ✓ **Invisible;** Once applied, the NOVITHOR Pesticide Free Termite Protection System is not an eye sore on the completed structure; indeed the finished barrier is invisible to the naked eye.
- ✓ **Quality;** Ensysrex are able to confirm its presence through analytical methods to ensure Quality Control at installations.
- ✓ **Liquid protection;** NOVITHOR Termite Proofing Resin is a liquid formulation containing a specially formulated blend of resins. It is applied to masonry mortar joints and rendered masonry surfaces.
- ✓ **Microscopic technology;** An untreated property is vulnerable to attack by termites. Termites burrow into cracks, removing sediment as they travel and their secretions break down normal mortar over time. NOVITHOR Termite Proofing Resin locks together with sand and cement particles to form an impenetrable termite proof barrier, working at microscopic levels.
- ✓ **Termite Proof sealant;** NOVITHOR Termite Proof Cementitious Parge contains the unique resins that solidify to turn it into a granite-like barrier that is impenetrable to termites.
- ✓ **Neutral Cure Silicone;** NOVITHOR Termite Proof Flexi-Gel is a high performance neutral cure silicone sealant and adhesive, specifically formulated for termite proofing buildings during construction. It is suitable for use indoors, outdoors or in confined spaces.

NOVITHOR PRODUCT DETAILS

- Formulation Type:** Consists of three pesticide free elements used in combination
- NOVITHOR TERMITE PROOFING RESIN
 - NOVITHOR TERMITE PROOF CEMENTITIOUS PARGE
 - NOVITHOR TERMITE PROOF FLEXI-GEL



PERFORMANCE

The NOVITHOR *Pesticide Free Termite Protection System* is guaranteed to stop termites entering a property by sealing all entry points with a granite-like barrier. It is used to protect:

- All mortar joints between bricks
- All joints in concrete slabs and walls, including basement walls, CBP walls, diaphragm walls, RC walls, etc.
- Around all penetrations through concrete walls and floors
- Around all conduits and / or service pipe openings
- Around all major plant boxes
- On retaining walls
- On selected masonry surfaces
- On rendered and concrete surfaces.



AVITHOR™

BIRD MANAGEMENT SYSTEMS

Bird control made simple, AVITHOR leaves buildings protected and the birds safe and unharmed.

AVITHOR NET BIRD PROTECTION SYSTEM



Protects against all bird species in low, medium or high pressure areas.

Square-mesh anti-bird nets are designed to protect large spaces.

Description

High-density polyethylene square-mesh nets, knotted and mass UV-stabilised. Chemically inert, rot-proof, highly-resistant to different weather conditions and a very wide range of chemicals. Resistant from 430 kg/m², these nets are not anti-fall nets, which have different specifications.

Available in a range of sizes with mesh dimensions of 19 mm and 50 mm, colours black or stone. AVITHOR Mist Net is also available in various sizes.



AVITHOR DETERRENT SPIKES



Protects against most bird species in medium or high pressure areas.

Once fitted, AVITHOR DETERRENT SPIKES form a virtually invisible barrier to deter birds from landing or nesting on the fitted surfaces, while causing them no harm.

Description

Spoons in stainless-steel / Steelinex® / Steelinex®+ (1.3 mm or 1.4 mm). Jointly pliable on a virgin polycarbonate base, mass UV-stabilised. AVITHOR DETERRENT SPIKES are manufactured using non-corroding materials.



AVITHOR DADDI LONG LEGS BIRD DETERRENT SYSTEM



Pigeons



Gulls



Seagulls

Protects against most large bird species in low or medium pressure areas.

The **AVITHOR DADDI LONG LEGS™** Bird Deterrent is designed to prevent birds from landing in hard to protect areas. Ideal for open spaces such as flat roofs or air conditioning units, as well as other situations such as domed or pointed roof peaks, and other areas where alternatives such as spiking or netting are too difficult or not possible.

The thin, stainless steel rods rotate in the breeze and wave menacingly, interfering with birds as they attempt to land. Designed to be as discrete as possible DADDI LONG LEGS is almost invisible from a distance of 20 metres or more. Being inconspicuous the DADDI LONG LEGS can be installed in high traffic or public areas with little risk of it causing offense by its appearance.

The DADDI LONG LEGS is for the safety conscious, the stainless steel rods are fitted with plastic tips to ensure no injury to birds, humans or other animals.

Available in three sizes

1.2 metres / 1.8 metres / 2.4 metres

AVITHOR BIRD-OUT ELECTRO-VIBRATORY BIRD REPELLENT SYSTEM



Sparrows



Starlings



Pigeons



Gulls



Seagulls

Protects against all bird species in low, medium or high pressure areas.

Description

BIRD-OUT uses a sequential electric generator equipped with a condenser to produce a repellent effect that is harmless to birds according to humane standards.

BIRD-OUT™ provides an efficient barrier to protect against birds. Its components are flexible, so they fit all architectural profiles perfectly, whilst preserving the aesthetic quality of the area to be protected

Easy to bend to follow the profile of the architecture. Directional changes can easily be produced using BDO clips or torsion springs.



AVITHOR E-TRACK



Sparrows



Starlings



Pigeons



Gulls



Seagulls

Protects against all bird species in low, medium or high pressure areas.

AVITHOR E-TRACK has changed the face of the bird control industry. One product is able to protect a wide variety of surfaces from all bird species, while at the same time being virtually invisible, and incredibly durable.

E-Track protects straight ledges, and curves to easily to protect sign letters. Jumpers snap quickly to the track, making it easy to power multiple tracks. A solar charger unit mounts to the building and sends intermittent power down the two conductors.

Quick connectors are used every 16 metres, or wherever else connections are needed. Corner Quick Connectors make 90 degree angles a snap.

AVITHOR E-TRACK comes in a range of colours in 15 m rolls. A full range of accessories are also provided.



AVITHOR EAGLE EYE



Protects against most bird species in low to medium pressure areas in combination with other bird management systems.

The AVITHOR EAGLE EYE bird scarer uses reflected light beams that flash at various angles from the rotating EAGLE EYE units to disorientate and irritate the birds.

The EAGLE EYE is fitted with a 12 volt DC motor to make it turn at a specific speed, reflecting the light beams at constant intervals.

The EAGLE EYE functions optimally in direct sunlight. Artificial light can be used for indoor application or shady areas but is not as effective as direct sunlight and more units will be needed to cover the same area.

The reflective surface of the EAGLE EYE is manufactured from durable ABS plastics and will not break even during hailstorms. Animal welfare institutions are in favour of the EAGLE EYE because it is not harmful to any animals or the environment.



The AVITHOR EAGLE EYE flash flags complement and enhance the effectiveness of EAGLE EYE.

The flash flag is designed to freely twist and turn in the wind to flash the sun's reflection at countless angles, deterring birds from the area when used in conjunction with the AVITHOR EAGLE EYE.

AVITHOR NIGHTMARE SOUND SYSTEM



The AVITHOR NIGHTMARE Sound System uses ultrasonic sound waves from 10078 hertz up to 15354 hertz to discourage birds such as starlings and Indian mynas from roosting over night. The sound output is non-repeating, and even the output time is varied between 450 and 2500 milliseconds, so the birds do not become accustomed to the sound pattern.

Description

The System is easy to install, requiring only a 12 v power supply (included) which can be run from any standard mains power outlet. If there is no mains power available, you can use a regulated solar panel with battery backup; also available from Ensystem.

Designed to be installed on rooves, the AVITHOR NIGHTMARE system should only be used as part of a complete bird management program in conjunction with day-time control measures such as AVITHOR Bird Spikes; AVITHOR NET, AVITHOR EAGLE EYE, etc.

AVITHOR EXTREME SOUND SYSTEM



Description

The AVITHOR EXTREME Sound System projects 130 dB at a frequency range between 16,000 Hz - 23,000 Hz. Combined with variable sound waves, intruding pigeons will not get used to the sounds emitted by the EXTREME Sound System.

The EXTREME Sound System protects an unobstructed area of approximately 150 square meters in a fan shape, with a radius of about 10 - 15 m in a 90 degree arc.

The sound emitted cannot be heard by human beings, and is uncomfortable to pigeons ONLY.

The AVITHOR EXTREME Sound System can be used indoors or outdoors as part of a complete bird management program in conjunction with other control measures.

GOODNATURE®

AUTOMATIC HUMANE RAT + MOUSE TRAP

A truly eco-friendly, poison free solution, using no chemicals, representing a huge progression in rodent control technology.



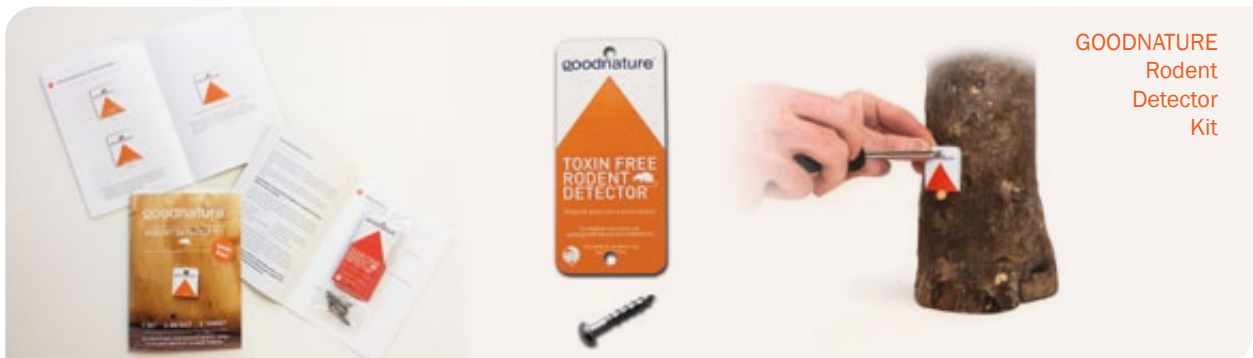
GOODNATURE KEY FEATURES

- ✔ **Intelligent;** GOODNATURE E2 Trap humanely kills the target pest, and then automatically resets itself, ready for the next invader.
- ✔ **Simple and effective;** the GOODNATURE E2 Trap was originally developed for use in large scale conservation programs.
- ✔ **Non-toxic;** Operating it is a breeze. And no concerns about secondary toxicity affecting raptors or other protected predators.
- ✔ **Adaptable;** The E2 is specifically designed for killing rats and mice.
- ✔ **Constructed for use in the toughest wilderness environments;** it is equally at home around factory fencelines, in subfloors, attics or the backyard.
- ✔ **Humane Standard Approved;** Class A for rats, the best rating possible for humane kill. No other trap kills instantly like the Goodnature E2 to meet this Standard.
- ✔ **Multi-kill technology;** Powered by a small CO₂ cylinder it provides patented, multi-kill technology; designed to kill up to 24 or more rats or mice on a single charge.

PERFORMANCE

The key to success with any rodent trapping program is to ensure that the rodents will interact with the trap. From this perspective trap placement is crucial to success. The GOODNATURE Rodent Detector Kit helps to take the element of chance out of the equation and provide for faster and more reliable trap/ bait placement to facilitate quicker results and more dead rodents.

The toxin-free GOODNATURE E2 Trap works by striking the skull of the rodent with a glass reinforced, polymer Piston, killing it instantly. This piston is driven by a precisely measured volume of compressed carbon dioxide when the rodent triggers the trap. Once the rodent has been struck, the Piston returns, dropping the rodent to the ground. The trap then resets immediately. The E2 employs a very sensitive Leaf360 Trigger System™. As the rodent brushes the leaf aside to investigate the lure, the trap is instantly fired. Then, almost as quickly, it resets itself ready for the next target pest.



RODENTHORTM BLOCK RODENTICIDE

A TRUE SINGLE FEED RODENTICIDE

For use in all situations, against all species of rats & mice.

RODENTHOR BLOCK RODENTICIDE KEY FEATURES

- ✓ **Ready to use block bait;** Suitable for use in damp or dry situations in and around industrial, commercial, public services, agricultural and domestic buildings.
- ✓ **Economical block size;** The 15 g block allows more placements, reduces wastage and provides for more effective control of rats and mice.
- ✓ **Works in the toughest situations;** Controls rodents resistant to other anticoagulants, including warfarin, coumatetralyl and bromadiolone.
- ✓ **Irresistible to mice and rats;** This highly palatable extruded block uses the highest quality ingredients to ensure it's irresistible to rats and mice.
- ✓ **Clever design;** The block has been designed with a central hole for easy mounting in various situations and several sharp corners to increase its attractiveness to rodents by providing numerous gnawing edges.

RODENTHOR BLOCK RODENTICIDE PRODUCT DETAILS

- Active Ingredient:** 0.05 g/kg brodifacoum
Pesticide Group: Hydroxycoumarin
Formulation Type: All weather block
Pests Controlled: Rats and mice
Pack Size/ Code: 8 kg (RDTB1007), 3 kg (RDTB1008)

PERFORMANCE

RODENTHOR BLOCK RODENTICIDE is a tough, efficient eliminator of rats and mice. The extruded block has effective weather resistance to make it survive in most environments. One feed is all that is required to kill a rodent. The 15 g block uses the most potent rodenticide on the market, brodifacoum, and is optimised to tackle rodents without using excessive bait, so your purchase goes further.

Nails or wire may be used to fix blocks to prevent them being removed by rodents.

Alternatively use RODENTHOR Block Rodenticide in the Ensystex RODENTHOR Bait Stations such as the PETI, ALPHA, BETA or PILOT Stations to enhance effectiveness.

RODENTHOR™ SOFT BAIT

FATAL ATTRACTION

Irresistible to rodents, and a single feed is lethal to every rodent, every time.



RODENTHOR SOFT BAIT KEY FEATURES

- ✓ **Made from the finest ingredients;** RODENTHOR's soft pasta base is by far the most palatable bait presentation for rodents.
- ✓ **Each 15 g sachet is enough to kill a rat;** whilst ensuring your purchase goes further.
- ✓ **Attractive;** The edible sachets allow the release of the carefully selected aromas which draw rodents to the bait. They then readily feed on the high protein, moist pasta-based bait which provides both a high quality food source, and moisture.

RODENTHOR SOFT BAIT PRODUCT DETAILS

- Active Ingredient:** 0.05 g/kg brodifacoum
- Pesticide Group:** Hydroxycoumarin
- Formulation Type:** Soft paste bait in an edible sachet
- Pests Controlled:** Rats and mice
- Pack Size/ Code:** 9 kg (RDTB1009), 3 kg (RDTB1010)

PERFORMANCE

RODENTHOR *Soft Bait* is a tough, efficient eliminator of rats and mice. One feed is all that is required to kill a rodent. The 15 g bait uses the most potent rodenticide on the market, brodifacoum, and is optimised to tackle rodents without using excessive bait, so your purchase goes further. Due to it being the most palatable bait formulation on the market, this should always be considered as your first choice for rodent baiting programs, especially at difficult sites.





RODENTHORTM MONITOR BLOCKS

A PROFESSIONAL APPROACH TO RODENT MANAGEMENT

RODENTHOR MONITOR BLOCKS OVERVIEW

25 g NON-TOXIC extruded wax block; for monitoring rodent activity in sensitive areas or for use as part of a rodent maintenance program.

RODENTHOR MONITOR BLOCKS KEY FEATURES

- ✔ **Essential;** In the increasingly professional world of rodent management, this is an essential tool for professional pest managers. Particularly since there is ever increasing pressure to minimise the use of second generation anti-coagulant rodenticides (SGARs) in the environment.
- ✔ **Non-toxic;** In many situations rodenticide is placed, even though there are no active rodents known to be present. It is there for maintenance purposes or 'just in case'. RODENTHOR Monitor Blocks offer a non-toxic alternative in such situations, allowing professionals to offer a lower risk policy and better protect SGARs for when they are really needed.
- ✔ **Pre-feed program;** The other use for RODENTHOR Monitor Blocks is as a pre-feed. Many studies show the benefits of a rodent management program commencing with a pre-feed program to establish a high degree of comfort for the rodents feeding on your bait source. Only when you detect rodent activity do you replace the non-toxic monitors with the toxic bait.
- ✔ **Highly attractive;** Made of the same highly attractive food sources used for RODENTHOR Block Bait, RODENTHOR Monitor Blocks allow feeding to commence before the toxic bait blocks are provided.
- ✔ **Sensitive;** They are ideal for monitoring rodent activity in sensitive areas, in food industries, schools, hospitals and in any place where, according to HACCP and IPM (Integrated Pest Management), the use of poisonous baits must be reduced or avoided. It is still always advisable to protect bait points from non-target animals and from water using Ensystem's RODENTHOR Bait Stations. This will also ensure improved feeding since the Stations provide a safe haven for the rodents.
- ✔ **Safe for damp areas;** RODENTHOR Monitor Blocks retain their attractiveness to rats and mice in damp locations and are enriched with highly palatable ingredients for rodents.

RODENTHOR MONITOR BLOCKS PRODUCT DETAILS

- Active Ingredient:** None
Formulation Type: Ready to use food source
Pests Controlled: Rats and mice
Pack Size/ Code: 5 kg pail (RDTB2000)

RODENTHOR™ RAT OUT

RODENT REPELLENT

A new innovation, RODENTHOR™ RAT OUT naturally repels rodents allowing exclusion jobs to be done on the spot, and trapping and baiting programs to be improved.



RODENTHOR RAT OUT OVERVIEW

RODENTHOR RAT OUT gives you a new weapon in your arsenal of rodent control options. RAT OUT acts as a blocking or redirection agent so that rodents will be prevented from using that particular path of travel.

RODENTHOR RAT OUT KEY FEATURES

- ✓ **Two deterrents;** garlic oil for smell and white pepper for touch. Most rodents avoid the product just based on the smell, but rodents that do come into contact feel an uncomfortable warmth on their sensitive areas (feet, face, etc.).
- ✓ **Herds;** Trapping and baiting programs can be improved by using RAT OUT to 'herd' the rodents towards them.
- ✓ **Immediate;** RAT OUT allows you to do exclusion work on the first visit.
- ✓ **Recurring revenue;** RAT OUT is a temporary solution so you can generate recurring revenue from exclusion; an industry first.
- ✓ **Electrically compatible;** Sensitive equipment, electrical wiring, cabinets and retail gondolas can be protected with RAT OUT.
- ✓ **Inexpensive;** RAT OUT is also the ideal solution where clients cannot afford a full proofing program.

RODENTHOR RAT OUT PRODUCT DETAILS

- Active Ingredients:** 5.71 g/kg garlic oil; 3.43 g/kg white pepper
- Pesticide Group:** Natural food ingredients
- Formulation Type:** Ready to use gel
- Pests Controlled:** Rats and mice
- Pack Size/ Code:** 4 x 30 g tubes (RDTR1000)

PERFORMANCE

All trials showed high efficacy for RODENTHOR RAT OUT with no rats penetrating past the deterrent spots in any of the trials, regardless of whether the material was freshly produced, or after accelerated storage at 54° Celsius for 14 days. RAT OUT is clearly highly effective and stable for at least two years as determined by the results after accelerated aging. RODENTHOR RAT OUT to the rescue in commercial, industrial & residential premises.



RODENTHOR™

RAT AND MOUSE STATIONS

Cleverly designed superior products combined with the highest grade quality materials. One key opens all Stations.

RODENTHOR BETA RODENT STATION



Compact Bait Station for Rats and Mice

This is the most cost effective and best-selling rodent Station in Australia, with a secure locking mechanism, rod for wax blocks and a patented secure locking system for fixing it to walls to prevent its removal.

Dimensions: 230 x 190 x 95 mm

Product Code: (RDTS1001)

RODENTHOR PETI MOUSE STATION



Small compact Station for Mice

Made from a high grade polymer this compact mouse bait Station is durable, shock resistant and features a secure key lock for safety.

Dimensions: 125 x 100 x 40 mm

Product Code: (RDTS1003)

RODENTHOR NEPTUNO RODENT STATION



Versatile Mid-size Station for Rats and Mice

A truly multi-purpose Station for use in many different configurations. Available with feeding trays, vertical and horizontal feeding rods for bait, water container, large snap trap and more.

Features our patented secure wall locking mechanism and secure locking mechanism with a key that fits all our rodent traps. Opens away from the wall for added convenience.

Product Code: (RDTS1018)

RODENTHOR ALPHA RODENT STATION



Tunnel Bait Station

This tunnel design and the low cost makes the ALPHA ideal for use in perimeter baiting programs.

Dimensions: 240 x 105 x 95 mm

Product Code: (RDTS1000)

RODENTHOR PILOT RODENT STATION



Our largest rodent Station provides enough room for a rat to turn around inside.

Made from high grade polymer, durable, shock resistant and very competitively priced.

Dimensions: 350 x 275 x 95 mm

Product Code: (RDTS1005)

RODENTHOR RAT AND MOUSE ATTRACTANT



Exclusively from Ensystem,

This long-lasting, high-protein food lure is irresistible to rodents.

The attractant can be placed in the RODENTHOR Snap Traps, inside multi-catch traps or live animal traps.

Product Code: 42 g tube (RDTB1003)

RODENTHOR SNAP TRAPS

PREDATOR TRAP



GATOR TRAP

ABS plastic with stainless steel

The RODENTHOR™ Snap Trap range is made from tough ABS plastic with a stainless steel, spring loaded snap mechanism. These traps are durable, simple to bait and easy to clean. A large trip paddle triggers the snapping mechanism which can be set off from just about any angle ensuring a catch no matter how the rodent approaches the unit.

Our most powerful snap trap, the GATOR TRAP (Product Code: RDTS1030). This trap can be placed in the NEPTUNO or PILOT Stations or used as a standalone trap.

The PREDATOR Snap Trap (Product Code: RDTS1029) is a smaller trap. Though still very powerful and capable of killing a rat, it is more suited to mice. This Trap fits inside the BETA Station, or can be used as a standalone trap.

RODENTHOR ROCK STATION



Rock Station

Placed around the perimeter of your landscaped gardens, you might never notice this wasn't a natural rock. Designed for baiting both rats and mice, it blends in with the outdoor environment. When closed, the tamper-resistant RODENTHOR Rock Station opens with the same key used for all our other Stations. Servicing the Station is easy too, with a pull-out drawer enabling the placement of your choice of RODENTHOR bait to fit in the cleverly concealed bait tray or on a stainless steel bait rod. It is made of heavy-duty, injection-moulded plastic; with a see-through, two-way opening to ensure rodents feel safe when they enter to feed.

Product Code: (RDTS1024)



VECTOTHOR™ LIGHT TRAPS

FLY CONTROL RANGE

Kills flies faster to create the most effective fly management system on the market.

VECTOTHOR KEY FEATURES

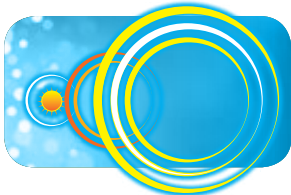
Ensysstex's VECTOTHOR Light Trap range features European design and technical standards, together with our exclusive partnership with Philips, for the provision of their Long-Life UV-A lamps. The VECTOTHOR range is designed to provide maximum efficacy in flying insect control. In fact VECTOTHOR improves catch rates by more than 86% compared to other units in the market through the use of cutting edge technologies. All units carry a 2 year guarantee.

PHILIPS LONG-LIFE LAMPS®



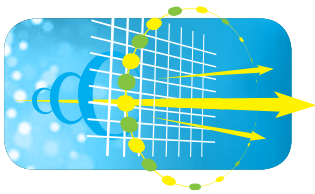
These lamps last at least twice as long and provide two years plus performance, more than double the UV-A light output of their nearest competitor and are exclusive to Ensysstex internationally. More UV-A light means greater attraction. Philips lamps are shatterproof and environmentally responsible, using 50% less glass and lasting 2 - 4x longer than competitor lamps. They also use 100% lead-free glass, no butyl compounds, 50% less mercury and offer a 10% reduction in running costs.

NATURAL UV-A LIGHT TECHNOLOGY™



VECTOTHOR uses an electronic ballast at 10,000 cycles per second so the lamp is indistinguishable from natural sunlight, thus providing greater attraction. Other lamps feature a mechanical starter and ballast that operates at 50 cycles per second. This means flies see the UV-A light as a rapidly flickering light which is unlike natural sunlight.

NATURAL CONTRAST GRID™

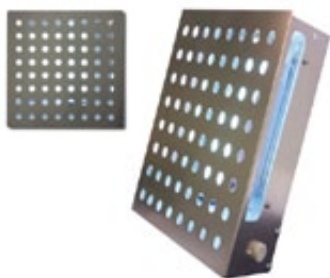


This provides 30% improved performance over conventional units since it reflects light onto the landing spot thereby stimulating the natural landing behaviour of flying insects.

KESTREL

Recommended for use in homes, offices, shops and restaurants.

The KESTREL can be mounted in two positions on the wall (square or diamond position) or free standing. The KESTREL has an all metal housing and uses a powerful UV-A lamp to lure insects into its trap. Product Code: (VECL1010)



Area coverage:	25 m ²
Light source:	1 x 15 Watt UV-A lamp
Catch type:	Temperature Optimised glue board
Lamp life time:	9,000 hrs
Protection rating:	IP 21 (drip proof)
Dimensions (LxWxD):	265 x 265 x 80 mm
Mounting position:	Wall mounted or free-standing

FALCON

Recommended for use in homes, offices, shops and restaurants.

The FALCON is constructed in such a way that the UV-A light is directed upwards. The FALCON has an all metal housing and uses a powerful UV-A lamp to lure insects into its trap. Product Code: (VECL1015)



Area coverage:	35 m ²
Light source:	1 x 18 Watt Philips PL UV-A lamp
Catch type:	Temperature Optimised glue board
Lamp life time:	9,000 hrs
Protection rating:	IP 21 (drip proof)
Dimensions (LxWxD):	440 x 190 x 200 mm
Mounting position:	Wall mounted

OSPREY

Recommended for use in shops and restaurants and dry industrial environments.

The unit can be wall mounted; the separate mounting strip offers easy maintenance & service. The OSPREY has a housing made of durable ABS plastic and white powder coated steel. Product Code: (VECL1016)



Area coverage:	50 - 80 m ²
Light source:	2 x 15 Watt shatterproof Philips Longlife UV-A lamps
Catch type:	By means of Temperature Optimised glue board
Lamp life time:	17,500 hrs
Protection rating:	IP 21 (drip proof)
Dimensions (LxWxD):	470 x 325 x 100 mm
Mounting position:	Wall mounted

HARRIER

Recommended for use in professional or industrial environments.

The HARRIER can be flag mounted on the wall or ceiling mounted. Mounting is a breeze with the snap-on mounting bracket. The HARRIER has an aluminium housing, which makes the unit both light and strong. Product Code: (VECL1018)



Area coverage:	100 - 150 m ²
Light source:	4 x 15 Watt shatterproof Philips Longlife UV-A lamps
Catch type:	Temperature Optimised centrally located glue board
Lamp life time:	17,500 hrs
Protection rating:	IP 21 (drip proof)
Dimensions (LxWxD):	500 x 340 x 160 mm
Mounting position:	Wall, flag or ceiling mounted

SEA EAGLE 150 EX

Recommended for use in areas with a potential danger of a gas or dust explosion.

The SEA EAGLE 150 EX is hose-proof and explosion proof IP rating of 68 and specially designed stainless steel front grid which optimises the attraction potential. The unit can be wall mounted in situations where there is risk of explosion. Product Code: (VECL1013)

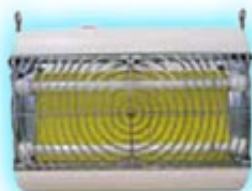


Area coverage:	100 - 150 m ²
Light source:	2 x 18 Watt shatterproof Philips Longlife UV-A lamps
Catch type:	Temperature Optimised glue board
Lamp life time:	17,500 hrs
Protection rating:	IP 68 (hose proof/explosion proof)
Dimensions (LxWxD):	940 x 600 x 140 mm
Mounting position:	Wall mounted

SEA EAGLE 250E WP

Recommended for use in professional or industrial environments with a high humidity.

The unit can be wall mounted or ceiling mounted. The SEA EAGLE 250E WP has a specially designed front grid made of stainless steel which optimizes its attraction potential. Product Code: (VECL1012)



Area coverage:	250 - 400 m ²
Light source:	4 x 18 Watt shatterproof Philips Longlife UV-A lamps
Catch type:	Temperature Optimised glue board
Lamp life time:	17,500 hrs
Protection rating:	IP 65 (hose proof)
Dimensions (LxWxD):	650 x 400 x 190 mm
Mounting position:	Wall mounted or ceiling mounted

CONDOR 40 HT

Recommended for use in offices, non-food shops and non-food warehouses.

The unit is constructed in such a way that the UV-A light emission is 360 degrees around the unit. The CONDOR 40 HT has an all metal housing and uses a powerful UV-A lamp to lure insects into its trap. Product Code: (VECL1006)



Area coverage:	40 m ²
Light source:	1 x 22 Watt Phillips UV-A lamp
Catch type:	Short circuit proof high tension grid
Lamp life time:	9,000 hrs
Protection rating:	IP 21 (drip proof)
Dimensions (LxWxD):	370 x 370 x 140 mm
Mounting position:	Wall mounted, ceiling mounted or free standing

CONDOR 125 HT

Recommended for use in non-food professional or industrial environments.

The CONDOR 125 HT can be wall mounted or ceiling mounted. An optional mounting bracket is also available to flag mount the unit. The CONDOR 125 HT has a special designed front grid which optimizes the attraction potential. This grid is made of durable ABS. Product Code: (VECL1005)



Area coverage:	125 - 150 m ²
Light source:	4 x 15 Watt shatterproof Philips Longlife UV-A lamps
Catch type:	Short circuit proof high tension grid
Lamp life time:	17,500 hrs
Protection rating:	IP 21 (drip proof)
Dimensions (LxWxD):	500 x 350 x 170 mm
Mounting position:	Wall, flag or ceiling mounted

MERLIN 45E

Recommended for use in homes, offices, shops and restaurants.

The unit can be mounted in multiple positions onto the wall or the ceiling or it can even be used free standing. The MERLIN 45E has a stainless steel front grid, with the housing made of durable ABS plastic and white powder coated steel. Product Code: (VECL1003)



Area coverage:	45 m ²
Light source:	1 x 15 Watt shatterproof Philips Longlife UV-A lamp
Catch type:	Temperature Optimised glue board
Lamp life time:	17,500 hrs
Protection rating:	IP 21 (drip proof)
Dimensions (LxWxD):	550 x 120 x 120 mm
Mounting position:	Wall, ceiling or cabinet mounted, or free standing

MERLIN 100E

Recommended for use in shops and restaurants and dry industrial environments.

The unit can be mounted in multiple positions onto the wall or the ceiling. The MERLIN 100E has a stainless steel front grid, with the housing made of durable ABS plastic and white powder coated steel. Product Code: (VECL1000)



Area coverage:	100 m ²
Light source:	2 x 15 Watt shatterproof Philips Longlife UV-A lamp
Catch type:	Temperature Optimised glue board
Lamp life time:	17,500 hrs
Protection rating:	IP 21 (drip proof)
Dimensions (LxWxD):	570 x 220 x 160 mm
Mounting position:	Wall and ceiling mounted

KINGFISHER

Recommended for use in shops and restaurants and wet industrial environments.

The hose proof IP 65 rated KINGFISHER can be mounted in multiple positions on the wall or the ceiling. Constructed with a stainless steel front grid, with the housing made of durable ABS plastic and white powder coated steel. Product Code: (VECL1002)



Area coverage:	100 m ²
Light source:	2 x 15 Watt shatterproof Philips Longlife UV-A lamps
Catch type:	Temperature Optimised glue board
Lamp life time:	17,500 hrs
Protection rating:	IP 65 (hose proof)
Dimensions (LxWxD):	570 x 220 x 160 mm
Mounting position:	Wall mounted or ceiling mounted

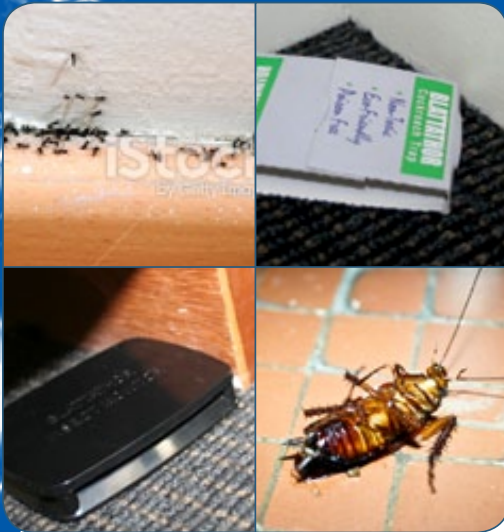
PEREGRINE 3

Recommended for the toughest conditions and most severe fly problems in kitchens, food production areas, and more.

With its totally unique, world first design and fly trapping features, the PEREGRINE is easy to service, stylish and effective, featuring European design build standards and a diffuse light output. Product Code: (VECL2017)



Area coverage:	120 m ²
Light source:	3 x 15 Watt shatterproof Philips Longlife UV-A lamps
Catch type:	Temperature optimised glueboard
Lamp life time:	17,500 hrs
Protection rating:	IP 21 (drip-proof)
Dimensions (LxWxD):	470 x 325 x 100 mm
Mounting position:	Ceiling and wall mounted



INSECT BAIT STATIONS

Chemical free Professional Pest Management monitoring systems.

HYMENOPTHOR ANT BAIT STATION



Durable device for easy mounting

The unique slide mounting system makes the HYMENOPTHOR Ant Bait Station very easy to service, while user selectable insect entry points ensure versatility regardless of the *Station* location. Moulded from food grade polypropylene, these rugged, reusable *Stations* come complete with a self adhesive strip for the 'slide-mount' backing plate or a zip tie option allowing for any required mounting situation. Product Code: (CHEHY1000)

BLATTATHOR COCKROACH TRAP WITH LURE



Attractive, disposable cardboard trap

Each BLATTATHOR Cockroach Trap is versatile and can be used as either a single large low-line trap, in areas of higher infestation; or it can be separated to form three small monitor traps, allowing you the opportunity to make more placements. This is particularly useful when monitoring to determine the effectiveness of your control program. Each trap comes with three Cockroach Attractant Tablets. Product Code: (CHEBT1000)

BLATTATHOR COCKROACH / INSECT MONITOR WITH LURE



Low profile plastic cockroach Monitor with Glueboard & Lure.

A professional insect trap with lure and glueboard. Act responsibly by re-using and gain the added benefit of a build up of cockroach aggregation pheromones. With its low profile, the Insect Monitor fits under objects or can be used on its side in narrow openings. It is ideal to use inside and outside residential accounts, in food processing plants and in commercial accounts. High-performance tablet lure supplied for attraction. Product Code: (CHEBI1000)

COCKROACH ATTRACTANT TABLET



Powerful attractant

Designed for use in both the BLATTATHOR Cockroach Trap and BLATTATHOR Insect Monitor, our exclusively designed, high performance lure tablets will draw the pests into your *Stations*. Provided in an easy to use blister pack to ensure freshness. They are simply placed on the glue board to attract cockroaches. Each lure will last at least 3 months. Product Code: (CHEBI1003)

VECTOTHOR™ VINEGAR FLY TRAP

THE ULTIMATE VINEGAR FLY TRAP



Targets Vinegar Flies, *Drosophila melanogaster* Meigen.

VECTOTHOR VINEGAR FLY TRAP KEY FEATURES

- ✓ **No maintenance or monitoring;** Simply peel back the protective paper and start trapping. Food- grade lure solution shown to attract 2.2 times more vinegar flies than other vinegar fly traps.
- ✓ **“No spill” conical trap design;** The patented design prevents the solution from escaping from the trap if dropped or tipped upside down! Adhesive backed holder (sold separately) allows you to trap vinegar flies anywhere! Underneath kitchen counters, sinks, tables, etc. Conical trap design lures in vinegar flies but won't let them escape.
- ✓ **Clear design - you'll know when it's working!;** The traps are clear so you can see the vinegar flies are being trapped. Lure solution remains effective for 30 days. Dispose of in regular household waste and replace with fresh trap.
- ✓ **Optional VECTOTHOR Vinegar Fly Trap Bracket;** Perfect for placing anywhere around kitchen or garbage areas for constant vinegar fly protection. Allows you to hang trap upside down, sideways or secure placement on counters, sinks etc.

VECTOTHOR VINEGAR FLY TRAP PRODUCT DETAILS

- Active Ingredient:** Non-toxic trap for vinegar flies.
- Formulation Type:** Ready to use lure, trap and kill design
- Pests Controlled:** Vinegar flies
- Pack Size/ Code:** 20 mL (VECB1002)

PERFORMANCE

VECTOTHOR VINEGAR FLY TRAP outperformed a range of other traps in independent University trials. Trap provides continuous vinegar fly protection. The “food grade”, non-toxic lure solution draws the fruit flies into the see-through traps where they are unable to escape. The patented, conical trap design also prevents the lure solution from spilling out from the traps, if it is dropped or knocked off a counter. Each trap lasts for 30 days with almost no monitoring or maintenance. Once the 30 days are up, simply dispose of the traps in the trash and replace with a new trap.

HIGH POWER TORCHES

For Professional Pest Managers

The Ensystex range of Torches have a really bright WHITE light that allows you to see much more clearly on your inspections. Plus there is no annoying dark area in the middle of the beam. This makes for less eye strain.

These benefits all flow to you thanks to the latest, cutting edge CREE LED technology. All models are made of rugged aluminium and solidly constructed.

THOR COMPACT - RECHARGEABLE



A powerful beam with a long battery life and rated IP67.

Lumens: 1200
Range: 1200 m



THOR MICRO - RECHARGEABLE

Slips into your top pocket yet burns brighter than torches many times larger.

Lumens: 700
Range: 150 m



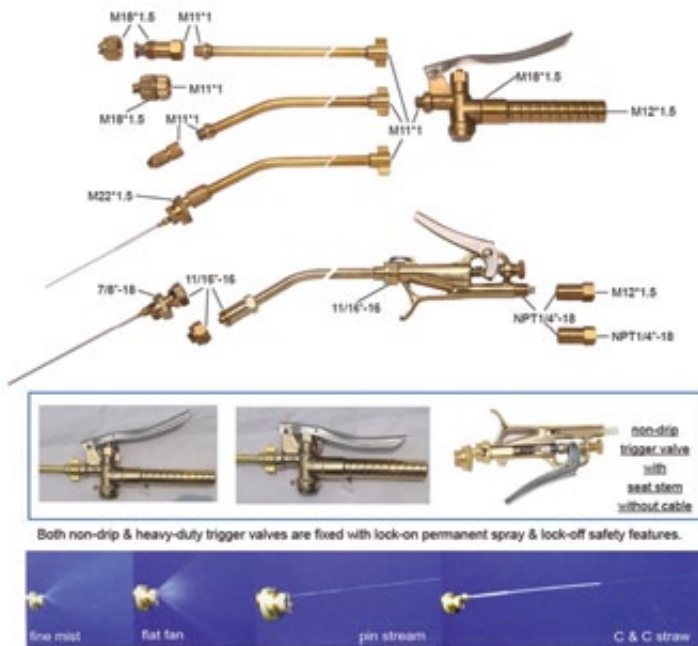
Specification	Compact Torch	Micro Torch
Light Source	Cree T6 LED	Cree T6 LED
Battery	2 x 18650 lithium	1 x 18650 lithium
Specs	3.7-4.2 v	3.7-4.2 v
Brightness	1200 lumens	700 lumens
Irradiation distance	200 m	150 m
Working time	100 min	120 min
Charging time	5-6 hours	5-6 hours
Ratios	Max-Med	Max-Med
Colour Temp	5000 K	5000 K
Weight	100 g	50 g
Colour	Black	Titanium
IP Rating	IP67	IP67
Body	Aviation aluminium alloy	Aviation aluminium alloy
Power	10 w	10 w
Ballast	AC 250-400 Hz	AC 250-400 Hz
Length	235 mm	130 mm

ACCUTHOR™ SPRAY EQUIPMENT

The ACCUTHOR range of spray equipment meets WHO standards with superior features for all professional uses. Durable and dependable the ACCUTHOR range will impress your clients too with its clean professional looks. All equipment is produced in highest quality stainless steel with brass fittings and viton seals.



5 L COMPRESSION SPRAYER WITH DRIP FREE LANCE



Product Code: (SPYE1013)



TERMI TOOL SUB-SLAB INJECTOR WITH 360 DEGREE NOZZLE

- Economical and durable
- Variable configurations for great flexibility
- Dual coupling size for different external attachments (e.g flowmeter)
- Built-in pressure gauge
- Multiple variety of stainless steel tips for wide range of application
- Dual-length stainless steel pipe-set with foot ram assembly
- Most effective and versatile with current termiticides
- 8, 10, 12 or 14 mm nozzles available

Product Code: (SPYE1007)





ACCUTHOR™

USL 1 L PRECISION SPRAYER

This precision sprayer is the perfect companion for **ATTRATHOR Targeted Insecticide**. Perfect for highly demanding services, it provides a very fine aerosol or crack and crevice stream spray.

ACCUTHOR USL KEY FEATURES

- ✓ **High grade;** High grade stainless steel bottle for corrosion-resistance
- ✓ **Professional;** Designed to project your professional image to your clients
- ✓ **Heavy duty;** Heavy duty pressure gauge with scratch proof glass dial allows accurate monitoring and control of the spray operation
- ✓ **Easy;** High efficiency pump design makes pumping to 10 bar easy
- ✓ **Ergonomic;** Handle designed for ergonomic comfort

ACCUTHOR USL PRODUCT DETAILS

Tank	Stainless steel SUS304, 1.33 litres capacity
Working Capacity	1 litre
Max. Working Pressure	8 KPa (8 bar)
Pump Cylinder	Stainless steel SUS304, with Viton™ check-valve
Spray Hose	Heavy duty 3 m coiled
Pressure Release Valve	Supplied as standard
Pressure Gauge	0-10 bar, 0-150 psi
Discharge Valve	Brass, drip-free trigger valve 228 mm brass lance with multinozzle and crack and crevice straw
Total Height	(With handle) 295 mm
Net Weight	1.6 kg
Code:	(EQPA3001)

PERFORMANCE

Constructed entirely from chemical resistant materials such as Viton™, Teflon™, high grade stainless steel, brass, and other engineered materials.

A cable operated drip-free nozzle shut off actuated by the trigger valve provides maximum operator safety and environmental security. The trigger valve can also be simply locked on or off for added safety.

ACCUTHOR GEL GUN



High Performance, Adjustable, Stainless Steel Gel Gun.

The uniquely designed ACCUTHOR Gel Gun sucks the gel out of your gel tubes, ensuring a more accurate distribution and NO dripping.

The ACCUTHOR Gel Gun is fully adjustable so you can control the amount of product dispensed, and it comes complete with a range of different tip sizes to give you total control over droplet sizes. It is a rugged design, constructed from stainless steel to give you many years of accurate use when used with 30 g or 35 g classic professional gel tubes, 5 positions for accurate dosage are available to give you just the right amount of gel for the treatment, ensuring the most precise and cost-effective placement.

Product Code: (EQPA1000)

ACCUTHOR DUSTERS



ACCUTHOR™ PRECISION DUSTER

The ACCUTHOR Precision Duster is ideal for lightly applying dust into the smallest cracks and crevices. A range of optional accessories are also available including a belt pouch, an extension tube with nozzle, 25 mL vial and 125 mL dust bottle. The different dust vials/ bottles simply screw on to the duster.

Product Code: (EQPA2000)



ACCUTHOR™ BULB DUSTER

The ACCUTHOR Bulb Duster is a large rugged hand duster ideal for your day to day application of dust products. Can even be used upside down!

Product Code: (EQPD1003)



ACCUTHOR™ GRANULE DUSTER

The ACCUTHOR Granule Duster is just perfect for applying HYMENOPHTHOR Granular Ant Bait.

Product Code: (EQPD1001)



ACCUTHOR™ FOAM SPRAYER in action



ACCUTHOR™ FOAM SPRAYER

The high quality 5 L stainless steel ACCUTHOR™ FOAM SPRAYER is designed for use with PROTHOR, ULTRATHOR or MAXXTHOR when you need to get at termites inside the structure. Add your favourite Ensyslex termiticide and the foam concentrate for perfect results everytime

Product Code: (EQPA3004)

NOTES

NOTES



ENSYSTEX™

LEADING INNOVATION IN PEST MANAGEMENT

Call 13 35 36

www.ensystex.com.au

info@ensystex.com.au